

COBY®

MP3 & Video Player with
FM Radio

MP610-1G
MP610-2G
MP610-4G



Instruction Manual

Please read this manual carefully before operation

Table of Contents

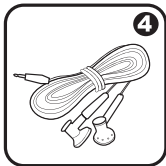
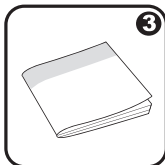
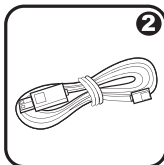
TABLE OF CONTENTS	2
PACKAGE CONTENTS	4
FEATURES	5
CONTROLS AT A GLANCE	6
Disabling the Controls (Hold)	8
GETTING STARTED	9
Charging the Battery.....	9
Charging with a Computer	9
Turning the Player On/Off	10
Resetting the Player	10
MAIN MENU	11
Main Menu Controls.....	11
MUSIC MODE	12
Music Browser Controls.....	12
Now Playing Controls (Music Playback)	14
Quick Option Menu	15
PICTURES MODE	17
Picture Browser Controls.....	17
Picture Viewer Controls	18
MOVIES MODE	19
Movie Browser Controls	19
Movie Playback Controls	20
RADIO MODE	21
Radio Tuning Controls.....	21
E-BOOKS MODE	23
E-Book Browser Controls.....	23
E-Book Reader Controls	24

Table of Contents

EXPLORER MODE	25
Explorer Controls	25
SETTINGS MODE.....	26
TRANSFERRING FILES TO THE PLAYER	28
Transferring with Microsoft Windows	29
Transferring with Macintosh OS X.....	29
Disconnecting from a Computer	30
Microsoft Windows.....	30
Macintosh OS X.....	31
VIDEO CONVERSION	32
Installation	33
Converting Video.....	34
FIRMWARE UPGRADES.....	36
TROUBLESHOOTING.....	37
SPECIFICATIONS	40

Package Contents

Please make sure that the items shown below are included in the package. Should an item be missing, please contact the local retailer from which you purchased this product.

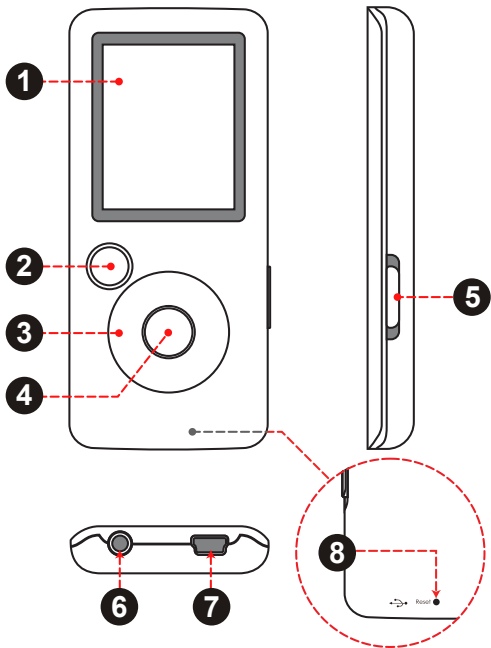


1. COBY MP3 Player
2. USB Cable
3. Instruction Manual & Documentation
4. Professional Stereo Earphones





Features

- ✦ Integrated flash memory
- ✦ 1.8" TFT LCD full-color display
- ✦ Plays music, video, photos and text
- ✦ ID3 and LRC support for song and synchronized lyric information display
- ✦ Integrated FM radio
- ✦ USB 2.0 Hi-speed for fast file transfers

Controls at a Glance



Controls at a Glance

Front View		
1. LCD Display		
2. Menu Button		<MENU>
3. Control Buttons		<UP>
		<DOWN>
		<LEFT>
		<RIGHT>
4. Enter Button		<ENTER>
Side View		
5. Power / Hold Switch <i>Slide and hold the switch down for Power. Slide the switch up for Hold.</i>		<POWER>
Bottom View		
6. 3.5mm Headphone Jack		
7. USB/Charge Port		
Rear View		
8. Reset Button		<RESET>

Controls at a Glance

Disabling the Controls (Hold)

When the <POWER> switch is set to the “Hold” position, your player’s controls are disabled.

1. To disable the controls, slide the <POWER> switch up until it clicks into the “Hold” position.
2. To enable the controls, slide the <POWER> switch down to release it from the “Hold” position.



i You may want to disable the controls to avoid turning on the player or activating the controls accidentally when it is in your pocket or bag.

A lock icon will appear on the screen when the controls are disabled. Re-enable the controls to continue.

Getting Started

Charging the Battery

Your player has an integrated rechargeable battery. Upon initial use, the battery should be charged fully to ensure optimal performance and battery life.

If the player has not been used in a while, the battery may need to be recharged overnight (about 8 hours).



The battery used in this device may present a fire or chemical burn if mistreated. Do not disassemble, incinerate, or heat the battery. Do not leave the battery in a place subject to direct sunlight, or in a car with its windows closed.

Do not connect the player to a power source other than that which is indicated here or on the label as this may result in the risk of fire or electric shock.

Charging with a Computer

Your player can be charged through a USB computer connection. Use the supplied USB cable to connect the player to a high-power USB port of a computer. The computer must be powered on and not in sleep mode.



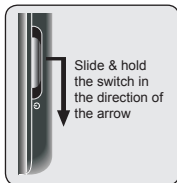
When the player is connected and charging, a USB symbol will be displayed on the player's screen.

Getting Started

Turning the Player On/Off

To turn the player on, slide the <POWER> switch down and hold it until the screen turns on.

To turn the player off, slide the <POWER> switch down and hold it until the screen turns off.



Resetting the Player

Reset the player if it should freeze and not respond or otherwise malfunction.

1. Disconnect your player if it is connected to a computer.
2. Use a paper clip to gently press the <RESET> button located on the rear of the player.

Main Menu

When you turn on the player, you will see the Main menu. The Main menu gives you access to the different function modes of your player. These modes are:

- Music: Browse and play music.
- Pictures: Browse and view pictures.
- Movies: Browse and play movies.
- Radio: Listen to FM radio broadcasts.
- E-Books: Browse and read text files.
- Explorer: Browse and play all files.
- Settings: Adjust the player's options.

Main Menu Controls

- ✦ To browse through the different modes, press <LEFT> or <RIGHT>.
- ✦ To select a mode, press the <ENTER> button.

Music Mode

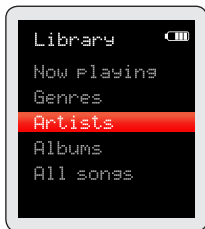
Browse for and play your music files.

i If you have loaded new music files onto the player, the music library will need to be refreshed when you enter Music mode. This process may take several minutes. You will not be able to access the Music Browser screen until you refresh the music library.

For more information about how to get music onto your player, please refer to the section “Transferring Files to the Player”.

Music Browser Controls

When you choose MUSIC mode from the Main menu, you will see the Music Browser screen. You can choose to browse your music by song name, album, artist, or genre, or you may choose “Browser” to view the music files and folders on the player.



Function	Key Action
To browse through the list	Press <UP> or <DOWN>
To select an item	Press <ENTER>
To return to the previous screen	Press <LEFT>
To return to the Now Playing screen	Press <MENU>
To return to the Main menu	Hold <MENU>

Music Mode

i *If your music files contain ID3 song information tags, you will be able to view your tracks by Artist, Album, or Genre. To view all files (including those that do not contain ID3 information), select “All Songs” or use the “Browser” option.*

If music is already playing, you will have the additional option to return to the Now Playing screen.

i *Lyric display requires a “.LRC” lyric file which may be found on the internet or may be created with a Lyric file editor. Lyric files can contain synchronized timing information as well as lyric information.*

Lyric files must have the same name as its corresponding music file (e.g., “SongTitle1.lrc” and “SongTitle1.mp3”) and must be placed in the same directory.

Using the Quick Play List

To create a quick Play List that contains your favorite songs:

1. Select “Browser” from the Music Browser screen
2. Use the browser controls to select a song to add
3. Press and hold <ENTER>. The screen will display “Add to List”
4. Press <ENTER> to finish adding the song to the Play List

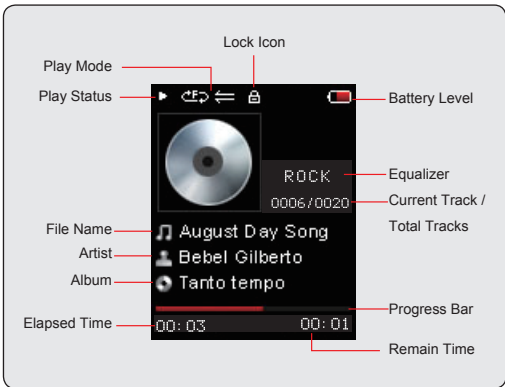
i *This quick Play List can be played from the Quick Option menu of the Now Playing screen (see page 16 for more details).*

Music Mode

Now Playing Controls (Music Playback)

To start playing music, browse for a song and then press <ENTER> to start playback.

When a song is playing, the Now Playing screen appears (see below).



Music Mode

The following functions may be performed from the Now Playing screen.

Function	Key Action
To play the next track	Press <RIGHT>
To play the previous track	Press <LEFT>
To forward-scan quickly through the current track	Hold <RIGHT>
To reverse-scan quickly through the current track	Hold <LEFT>
To pause/resume playback	Press <ENTER>
To access the Quick Option menu (see below for details)	Hold <ENTER>
To adjust the volume level	Press <UP> or <DOWN>
To return to the Music Browser screen	Press <MENU>
To return to the Main menu	Hold <MENU>

Quick Option Menu

To access the quick option menu, press and hold <ENTER> on the Now Playing screen.

- ✦ To browse through the settings, press <UP> or <DOWN>
- ✦ To select a setting, press <ENTER>
- ✦ To return to the previous screen, press <LEFT>

Music Mode

Equalizer

Select a digital equalizer preset to optimize the way the player processes audio signals. The options are: Normal, Pop, Rock, Classic, Jazz, and Bass.

Repeat

Change the repeat options to adjust the order in which tracks are played.

Item	Description
Normal	Play tracks in normal order.
Repeat One	Play the current track repeatedly.
Repeat All	Play all tracks repeatedly.
Random	Play tracks in random order.

Library

Return to the Music Browser screen.

Play List

Select "Play List" and then "My List" to play a list of your favorite songs.



To add songs to the list, see "Using the Quick Play List" on page 13.

Pictures Mode

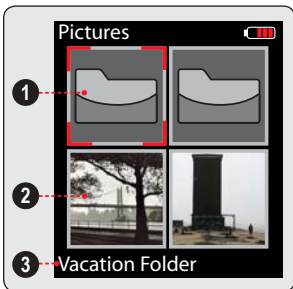
Browse for and view your photo files (JPG).



For more information about how to get pictures onto your player, please refer to the section "Transferring Files to the Player".

Picture Browser Controls

When you choose PICTURES mode from the Main menu, you will see the Picture Browser screen. Your pictures will be displayed as thumbnail images.



1. Folder (selected)
2. Picture
3. Name of the selected folder or picture

Use the Picture Browser to find all picture files loaded on your player.

Function	Key Action
To browse through the pictures & folders	Press <UP>, <DOWN>, <LEFT>, <RIGHT>
To select/view an item	Press <ENTER>
To return to the previous screen	Press <MENU>

Pictures Mode

Function	Key Action
To return to the Main menu	Hold <MENU>

Picture Viewer Controls

To view a picture, browse through the thumbnail pictures and then press <ENTER>.

The following functions may be performed from the Picture Viewer screen.

Function	Key Action
To view the next picture	Press <RIGHT>
To view the previous picture	Press <LEFT>
To start or stop slideshow mode	Press <ENTER>
To return to the Picture Browser screen	Press <MENU>
To return to the Main menu	Hold <MENU>




You can override and stop the automatic slideshow by pressing <LEFT> or <RIGHT> at any time.

The time period between pictures in slideshow mode can be adjusted in the Settings menu.

— Movies Mode

Browse for and play your movie files.

 *Your player supports MTV files encoded at 160 x 128 and 25 fps. Videos may need to be encoded with the included software for device playback.*

For more information about converting video, please refer to the section “Movie Conversion”.

For more information about how to get movies onto your player, please refer to the section “Transferring Files to the Player”.

Movie Browser Controls

When you choose MOVIES mode from the Main menu, you will see the Movie Browser screen.

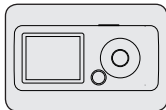
Use the Movie Browser to find all movie files loaded on your player.

Function	Key Action
To browse through the list of movie files & folders	Press <UP> or <DOWN>
To select/play an item	Press <ENTER>
To return to the previous screen	Press <LEFT>
To return to the Main menu	Hold <MENU>

Movies Mode

Movie Playback Controls

When a movie is playing, hold the player horizontally (landscape). The orientation of the controls will change accordingly.



Use the following controls during movie playback. (The name of the controls are still given as if you were holding the player vertically.)

Function	Key Action
To play the next movie	Press <DOWN>
To play the previous movie	Press <UP>
To forward-scan quickly through the current movie	Hold <DOWN>
To reverse-scan quickly through the current movie	Hold <UP>
To pause/resume playback	Press <ENTER>
To adjust the volume level	Press <RIGHT> or <LEFT>
To return to the Movie Browser screen	Press <MENU>
To return to the Main menu	Hold <MENU>

Radio Mode

Listen to FM radio broadcasts.



You must have a pair of headphones connected to the headphone jack to receive FM broadcasts; your player will utilize the headphone cord as an antenna.

Radio Tuning Controls

When you choose RADIO from the Main menu, you will see the Radio Tuning screen. You can search for stations, tune to stations manually, or tune to preset stations.



You must have saved preset stations prior to using preset tuning mode. Hold <ENTER> to automatically save all stations within reception range as preset stations. This will overwrite all previously saved preset stations.

The following functions may be performed from the Radio Tuning screen.

Function	Key Action
To toggle between normal (manual) and preset tuning	Press <ENTER>
To auto-save all available stations as preset stations	Hold <ENTER>
To tune to a higher station	Press <RIGHT>
To tune to a lower station	Press <LEFT>
To scan to the next highest station (normal mode only)	Hold <RIGHT>

Radio Mode

Function	Key Action
To scan to the next lowest station (normal mode only)	Hold <LEFT>
To save the current station as a preset station (normal mode)	Press <MENU>, then <ENTER>
To delete the current preset station (preset mode)	Press <MENU>, then <ENTER>
To adjust the volume level	Press <UP> or <DOWN>
To return to the Main menu	Hold <MENU>

E-Books Mode

Read text files loaded on your player (TXT).

- i** For more information about how to get text files onto your player, please refer to the section “Transferring Files to the Player”.

E-Book Browser Controls

When you choose E-BOOKS from the Main menu, you will see the E-Book Browser Screen.

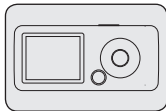
Use the E-Book Browser to find all text files loaded on your player.

Function	Key Action
To browse through the list of text files & folders	Press <UP> or <DOWN>
To select/view an item	Press <ENTER>
To return to the previous screen	Press <LEFT>
To return to the Main menu	Hold <MENU>

E-Books Mode

E-Book Reader Controls

When reading a text file, hold the player horizontally (landscape). The orientation of the controls will change accordingly.



Use the following controls while reading text. (The name of the controls are still given as if you were holding the player vertically.)

Function	Key Action
To read the next page	Press <DOWN>
To read the previous page	Press <UP>
To toggle the auto-scroll function	Press <ENTER>
To return to the E-Book Browser screen	Press <MENU>
To return to the Main menu	Hold <MENU>



You can override the auto-scroll function by pressing <DOWN> or <UP> at any time.

The time period between pictures in slideshow mode can be adjusted in the Settings menu.

Explorer Mode

Enter Explorer mode to view and delete folders and files loaded on your player.

To enter Explorer mode, select and confirm EXPLORER from the Main Menu.

Explorer Controls

When you choose EXPLORER mode from the Main menu, you will see the File Explorer screen. You can find and delete files or folders from the player.

Function	Key Action
To browse through the list of files & folders	Press <UP> or <DOWN>
To select a folder	Press <ENTER>
To return to the previous screen	Press <LEFT>
To delete a selected item	Press <MENU>
To return to the Main menu	Hold <MENU>

Settings Mode

Enter the Settings mode to set your player's system options.

To enter Settings mode, select SETTINGS in the Main menu.

Function	Key Action
To browse through the options	Press <UP> or <DOWN>
To select an item	Press <ENTER>
To cancel and return to the previous screen	Press <LEFT>
To return to the Main menu	Hold <MENU>

The following options are available. Some of these options may be set from the Quick Option menus.

Item	Description
Power	
Sleep	Set the duration of time (in minutes) until the player turns off automatically. A setting of "Off" will disable this power-saving feature.
Language	
Language	Set the language that the on-screen menus appear in.

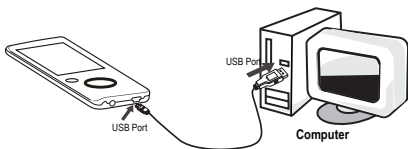
Settings Mode

Item	Description
<i>Backlight</i>	
Display	Adjust the duration of time (in seconds) that the backlight will remain on after a key press. A setting of "On" will keep the backlight on continuously.
<i>Sys Tools</i>	
Format	It may become necessary to format your player if data or files become corrupt. You may choose either Quick or Complete formatting. A Complete format will take more time.
Reset	Restore all of the player's settings to their factory-default state.
Sys Info	View Firmware & Memory Usage information.
Sort	Sort all music that loaded on your player. Select "Force Sort" to update the music library immediately. This process may take several minutes if you have transferred music files to the player recently.

Transferring Files to the Player

Connect the Coby player to a computer with the USB 2.0 cable provided to:

- ✦ Transfer files to and from your player
- ✦ Perform basic file management functions.



Upon connection:

- ✦ Your computer will automatically recognize the player as a Removable Disk.
- ✦ To open the player to view files, double-click the icon that appears.

Once you have opened the player's folder, simply drag and drop files to the player as you would a floppy disk.

- ✦ Copy music files to the "MUSIC" folder
- ✦ Copy movie files to the "MOVIE.DIR" folder
- ✦ Copy photo files to the "PHOTO.DIR" folder
- ✦ Copy text files to the "TEXT.DIR" folder.

Transferring Files to the Player

If you need further assistance with transferring files, please refer to your operating system's instruction manual or on-screen help. If you are using media management software such as iTunes, Winamp, or Windows Media Player, please refer to their documentation for support.

Transferring with Microsoft Windows

1. Open a file explorer window. Locate the files you would like to transfer from your computer. Select the files/folders with the mouse and press CTRL-C (copy) on the keyboard.
2. Double-click the "My Computer" icon on your desktop and then double-click the icon that represents your Coby player (e.g., MP610 / Removable Disk). The computer will display all files and folders currently stored in the player.
3. Press CTRL-V (paste) on the keyboard to transfer the files you selected in Step 1 to the player.

Transferring with Macintosh OS X

1. Open a finder window. Locate the files you would like to transfer from your computer. Select the files/folders with the mouse and press APPLE-C (copy) on the keyboard.
2. Click on the Removable Disk icon located on the left side of the finder window. The computer will display all files and folders currently stored in the player.

Transferring Files to the Player

3. Press APPLE-V (paste) on the keyboard to transfer the files you selected in Step 1 to the player.

Disconnecting from a Computer

To avoid data loss or file/firmware corruption, disconnect the player as instructed below or as by your specific operating system.

Microsoft Windows

1. Double-click the green arrow in the taskbar located on the lower-right side of the computer screen (Safely Remove Hardware).



2. **Safely Remove Hardware:** Select “USB Mass Storage Device” from the list that appears and then click on “Stop”.

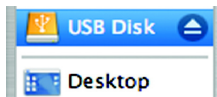


- Stop a Hardware Device:** Select “USB Mass Storage Device” from the list that appears and then click on “OK”.
3. When the “Safe to Remove Hardware” window appears, click the OK button and disconnect the USB cable from the player and your computer.

Transferring Files to the Player

Macintosh OS X

1. On the left side of the Finder Window, identify the appropriate Removable Disk icon.
2. Click on the “Eject” arrow on the right of the Removable Disk icon.
3. Disconnect the USB cable from the player and your computer.



Video Conversion

Use the video conversion software utility included on the Installation CD to create video files that are suitable for playback on the player.

Your player supports MTV files with the following specifications:

- ✦ 160 x 128 resolution at 25 frames per second (fps).

The video conversion software is included for your convenience and is compatible with Microsoft Windows operating systems only. There are many other video conversion utilities available for download or purchase on the internet.

Because the program is licensed free of charge, there is no warranty for the program, to the extent permitted by applicable law. Except when otherwise stated in writing the copyright holders and/or other parties provide the program "as is" without warranty of any kind, either expressed or implied, including, but not limited to, the implied warranties of merchantability and fitness for a particular purpose. The entire risk as to the quality and performance of the program is with you. Should the program prove defective, you assume the cost of all necessary servicing, repair or correction.

In no event unless required by applicable law or agreed to in writing will any copyright holder, or any other party who may modify and/or redistribute the program as permitted above, be liable to you for damages, including any general, special, incidental or consequential damages arising out of the use or inability to use the program (including but not limited to loss of data or data being rendered inaccurate or

Video Conversion

losses sustained by you or third parties or a failure of the program to operate with any other programs), even if such holder or other party has been advised of the possibility of such damages.

Installation

Minimum System Requirements

OS Support	Microsoft 2000/XP/Vista (32-bit only)
CPU	Pentium class equivalent or better
Memory (RAM)	>64MB
Free HD Space	10MB
Video	24-bit color adapter
WMP	Windows Media Player 9 or better

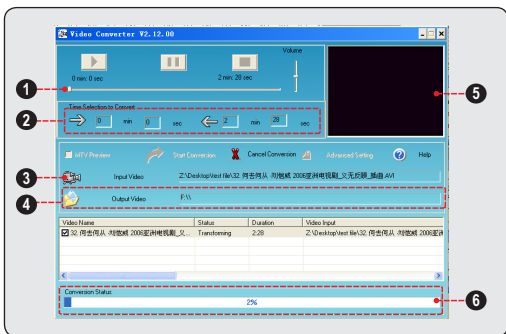
1. Copy the folder "VideoConverter_V2.12.00(160x128)" to your computer
2. To start the software, double-click the file "VideoConvert.exe"

Video Conversion

Converting Video

To start the software, double-click the file “VideoConvert.exe”.

The application window shown below will appear.



1. Seek Bar for preview and time selection
2. Start and End time-point selection
3. Select the video file to convert
4. Select the destination folder of the converted video file
5. Video preview window
6. Conversion progress bar

Video Conversion

To convert a video:

1. Click the “Input Video” button [3] to select the source video file to convert.
 - ✧ The source file must be one of the following video types: AVI (*.avi), WMV (*.wmv, *.asf), MPEG-1 (*.mpg), QuickTime (*.mov, *.qt), MPEG-2 (*.vob), RealMedia (*.rm, *.rmvb), MPEG-4, or 3GP (*.3gp)
 - ✧ DirectX 9.0, Media Player 9.0, and other codecs must be installed to support all media types.
3. Click the “Output Video” button [4] to select the folder that the converted file will be saved to.
4. Click the “Start Conversion” button to start the conversion process.
5. When the conversion is complete, copy the converted files to the player’s “MOVIE.DIR” folder for playback.

Firmware Upgrades

From time to time, COBY may release firmware upgrades to improve the performance of the Player or to add additional features. Please check the COBY website periodically at www.cobyusa.com to see if new firmware has been released for your player. If you are experiencing abnormal behavior with your player, you may choose to restore (format) your player before updating its firmware.



Do not interrupt the firmware upgrade process—doing so could damage your player and render it inoperable.

See the documentation that is included with the firmware upgrade file for detailed instructions.

Troubleshooting

The buttons do not work.

- ✦ Ensure that the Hold switch is disengaged.
- ✦ Reset the player (use a paper clip to gently press the Reset button on the rear of the player) and try again.

I cannot transfer files to the player.

- ✦ Ensure that your computer is running a supported operating system.
- ✦ If using a USB extension cable, ensure that it is securely attached to the player and the PC, or try using another USB cable.
- ✦ If you have connected the player through a USB hub, try connecting the player directly to your computer.
- ✦ Ensure that the player's memory capacity is not full.
- ✦ Ensure that the Hold switch is disengaged.

There is no sound during playback.

- ✦ Check the volume level.
- ✦ Ensure that the headphones are attached securely to the player.

The sound quality of the music is poor.

- ✦ Try playing the file on your computer. If the sound quality is still poor, try downloading the file again or re-encoding the file yourself.

Troubleshooting

- ✦ Ensure that the bit rate of the file is not too low. The higher the bit rate of the file, the better it will sound. The minimum recommended bitrate is 128kbps for MP3s and 96kbps for WMAs.
- ✦ Try lowering the volume of the player.
- ✦ Ensure that the headphones are attached securely to the player.

The player will not play my music file.

- ✦ Ensure that the file is in a compatible format.
- ✦ The file may be copy-protected and you no longer have authorization to play this file. If you feel this is in error, please contact the service from which you downloaded the file.

The LCD characters are corrupted or something is wrong with the display.

- ✦ Ensure that the correct menu language has been set.
- ✦ Reset the player (use a paper clip to gently press the Reset button on the rear of the player) and try again.

The player has malfunctioned.

- ✦ Reset the player (use a paper clip to gently press the Reset button on the rear of the player) and try again.
- ✦ Try updating the player's firmware. Please refer to the Firmware Upgrades section of this manual for instructions.

Specifications

Display Type	1.8" Full-Color LCD @ 160x128
Memory	MP610-1G: 1GB Flash MP610-2G: 2GB Flash MP610-4G: 4GB Flash
Audio Format Support	MP3, WMA, WAV
Video Format Support	MTV: 160x128, 25fps
Photo Format Support	JPEG
DRM Support	--
Song Info Support	ID3, Windows Media
FM Frequency Range	87.5 - 108.0MHz
PC Interface	USB 2.0 (MSC)
Plug and Play Support	Windows 2000/XP/Vista Macintosh OS X
Audio Output	3.5mm Stereo (Headphone)
Power Supply	Rechargeable Lithium-Polymer Battery USB Charge
Play Time	Music: 8 hours*
Unit Dimensions	1.65" x 3.66" x 0.38" (WHD)

Specifications and manual are subject to change without notice.

** Music play time is an estimated value based on playing an MP3 encoded at 128 kbps. Actual play time may vary depending on encoding method used and other factors.*

Coby Electronics Corporation

1991 Marcus Avenue, Suite 301
Lake Success, NY 11042

www.cobyusa.com

www.ecoby.com

Coby is a registered trademark of
Coby Electronics Corporation.

Printed in China.

610AL